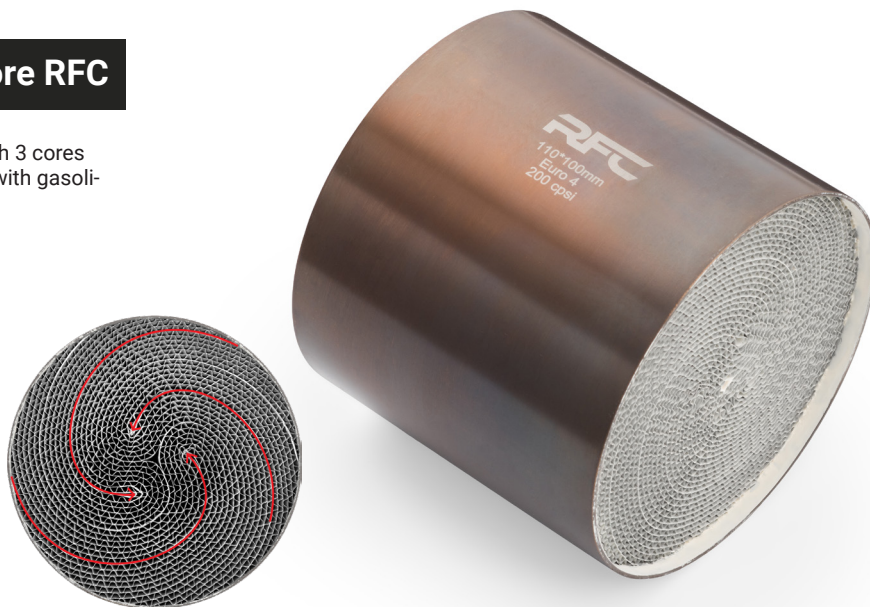


## universal catalytic converter core RFC

Universal S-type metal catalytic converter cartridge with 3 cores for increased performance and durability. Compatible with gasoline engines and LPG systems.

- Permanent 950 °C temperature resistance
- Instantaneous temperature resistance of 1100 °C



### Gasoline / LPG

Symbol	Standard	Inlet diameter	Insert length	Cartridge type	Capacity	
MS31LCC0044/E4/400	Euro 4	100 mm	100 mm	Metal - type S	400 CPSI	
MS11LCC0044/E4/400		110 mm	100 mm			
MS21LCC0044/E4/400		120 mm	100 mm			
MS51LCC0044/E4/400		125 mm	100 mm			
MS91LCC0054/E5/400	Euro 5	90 mm	60 mm		400 CPSI	
MS101LCC0054/E5/400		105 mm	80 mm			
MS11LCC0055/E5/500		110 mm	100 mm			500 CPSI
MS11LCC0054/E5/400		110 mm	100 mm			400 CPSI
MS21LCC0054/E5/400		125 mm	100 mm			
MS51LCC0054/E5/400		125 mm	100 mm			
MS41LCC0054/E5/400	130 mm	100 mm				
MS31LCC0064/E6/400	Euro 6	100 mm	100 mm		600 CPSI	
MS111LCC0064/E6/400		105 mm	100 mm			
MS11LCC0064/E6/400		110 mm	100 mm			
MS11LCC0066/E6/600		110 mm	100 mm			400 CPSI
MS121LCC0064/E6/400		115 mm	100 mm			
MS21LCC0064/E6/400		120 mm	100 mm			
MS51LCC0064/E6/400		125 mm	100 mm			
MS171LCC0064/E6/400		130 mm	60 mm			
MS181LCC0064/E6/400		130 mm	80 mm			
MS41LCC0064/E6/400		130 mm	100 mm			
MS191LCC0064/E6/400	140 mm	60 mm				
MS201LCC0064/E6/400	140 mm	80 mm				