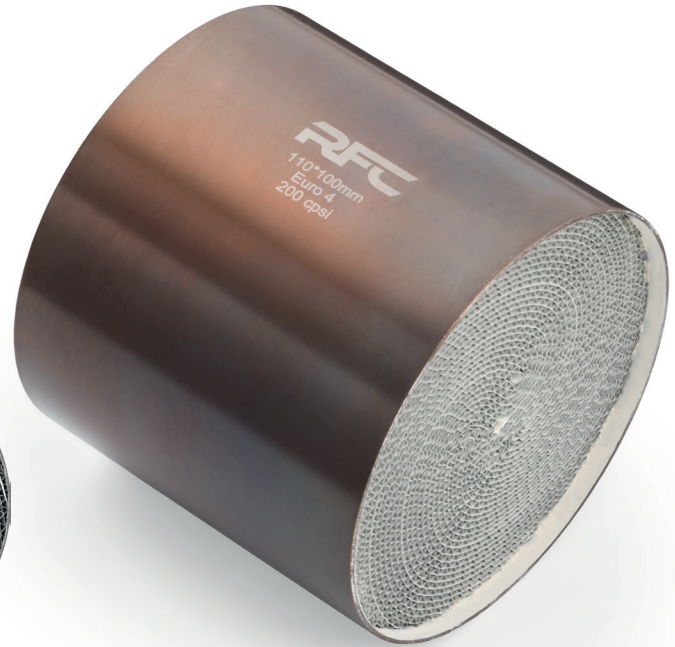
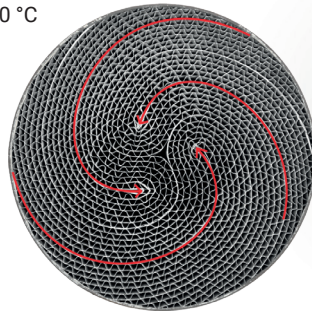


## Sport catalytic converter core RFC

Sports metal S-type catalytic converter insert with 3 cores for increased performance and durability. Compatible with petrol, diesel engines and LPG installations. A throughput of 200cps is the golden mean between efficiency and effectiveness of exhaust gas treatment. They are perfect for tuning - sporty performance without harm to the environment.

- Constant temperature resistance of 1100 °C
- Temporary temperature resistance of 1150 °C



Symbol	Standard	Inlet diameter	Insert length	Cartridge type	Capacity	
MS31LCC0022/E2/200	Euro 2	100 mm	100 mm	Metal - type S	200 CPSI	
MS31LCC0041/E4/100	Euro 4	100 mm	100 mm		100 CPSI	
MS31LCC0042/E4/200		100 mm	100 mm		200 CPSI	
MS11LCC0042/E4/200		110 mm	100 mm			
MS21LCC0042/E4/200		120 mm	100 mm			
MS31LCC0052/E5/200	Euro 5	100 mm	100 mm			
MS11LCC0052/E5/200		110 mm	100 mm			
MS21LCC0052/E5/200		120 mm	100 mm			
MS51LCC0052/E5/200		125 mm	100 mm			
MS41LCC0052/E5/200		130 mm	100 mm			
MS31LCC0062/E6/200	Euro 6	100 mm	100 mm			200 CPSI
MS11LCC0062/E6/200		110 mm	100 mm			
MS11LCC0062/E6/200		120 mm	100 mm			
MS171LCC0062/E6/200		130 mm	60 mm			
MS51LCC0062/E6/200		125 mm	100 mm			
MS171LCC0062/E6/200		130 mm	80 mm			
MS41LCC0062/E6/200		130 mm	100 mm			
MS191LCC0062/E6/200		140 mm	60 mm			
MS201LCC0062/E6/200		140 mm	80 mm			
MS141LCC0063/E6/300		149 mm	50 mm		300 CPSI	
MS131LCC0063/E6/300	149 mm	70 mm				