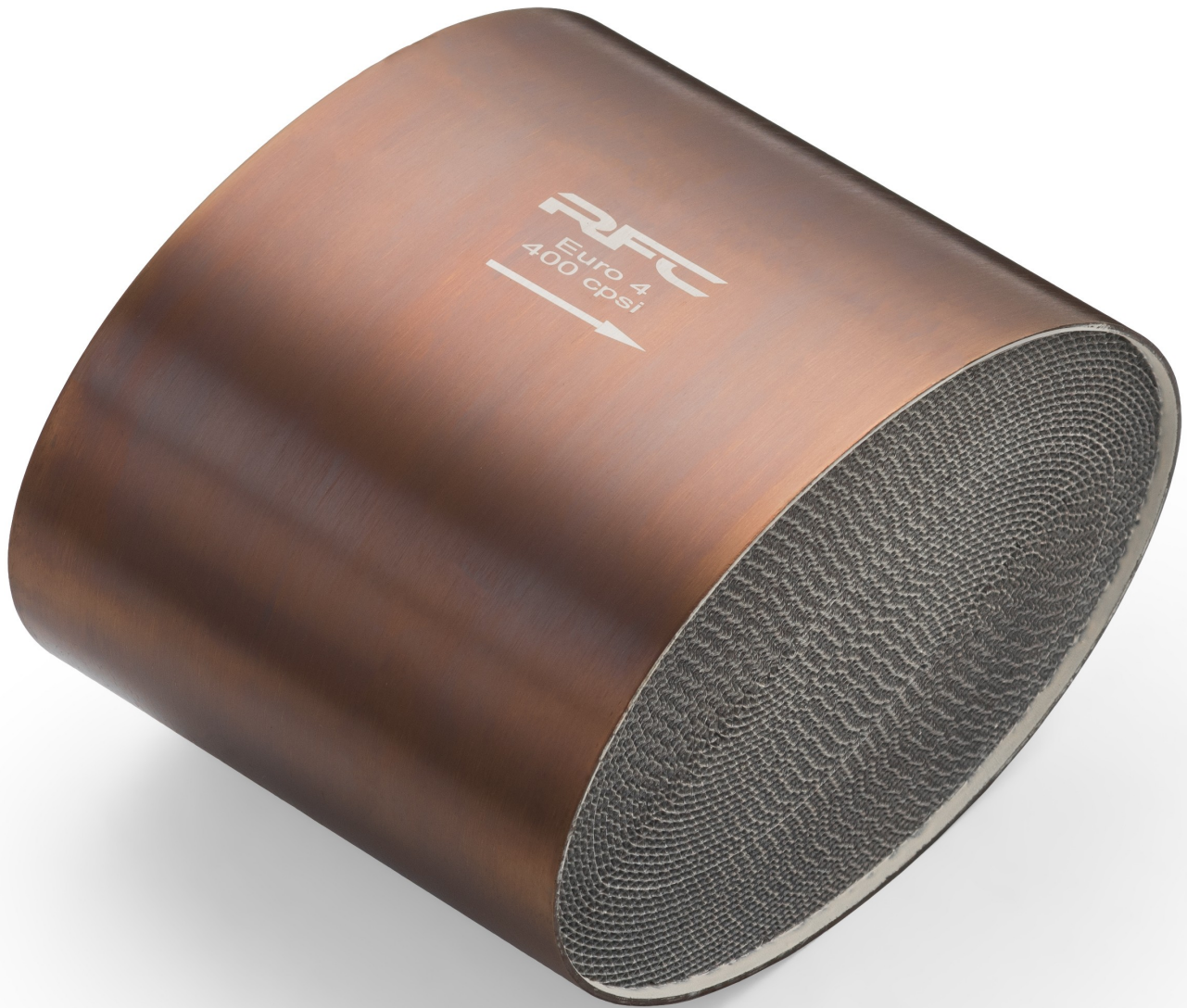




RFC elliptical catalytic converter core



Product codes:

Reference: MS231

EAN13: 5904347540746



Product features:

Catalyst application: Gasoline
Cartridge type: Standard
Cartridge material: Metal
Producer: RFC

Product attributes:

euro standard: Euro 2, Euro 4
Insert dimensions: 129x88x100, 153x106x100
Capacity (cpsi): 400

Product description:

Universal elliptical metal catalytic converter cartridge. Compatible with gasoline engines and LPG systems.

Permanent 950 °C temperature resistance

Instantaneous temperature resistance of 1100 °C

The catalytic converter, depending on the selected configuration, meets the requirements of the European directive:

- EURO 2 Directive 94/12/EC, 96/69/EC for passenger cars, effective since 1996.
- EURO 4 Directive 98/69/EC, 2002/80/EC for all vehicles, effective from 2005.

Manufacturer's warranty: 12 months or 50,000 km.

The catalytic converter cartridge is selected on the basis of the emission standard it is to meet and its dimensions. Unfortunately, no catalog provides the dimensions of the cartridge, because theoretically it is a non-replaceable part, so in order to properly select the cartridge you need to measure the diameter and length of the catalytic converter housing. Then subtract the thickness of the wall of the catalytic converter housing, since the cartridge is located inside the housing. For example, when the catalytic converter housing has a diameter of 110 mm, a cartridge with a diameter of 105 mm will be suitable.