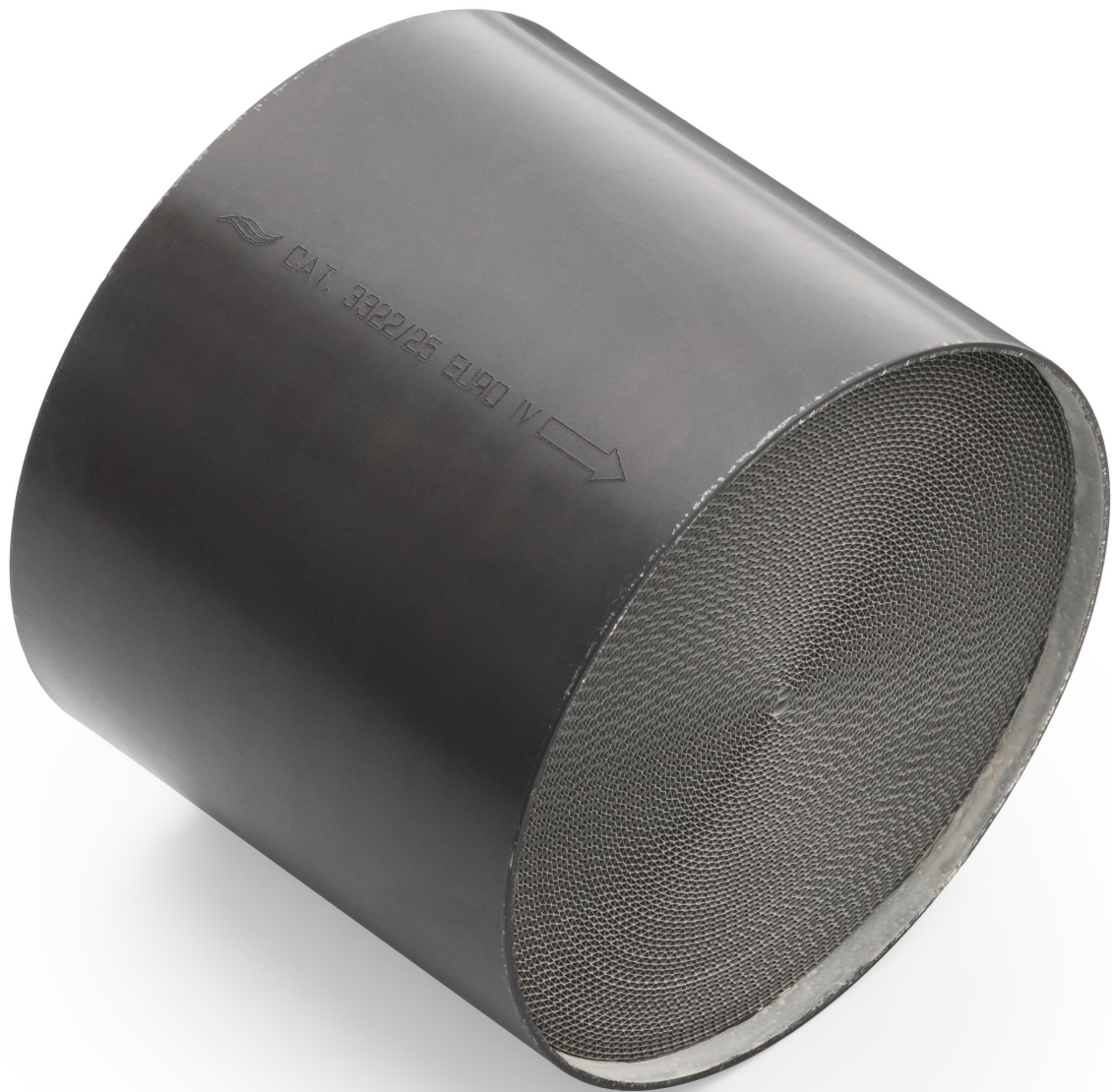




## Motorcycle AWG sport catalytic converter insert



### Product codes:

Reference: SPORT

EAN13: -



---

**Product features:**

Capacity (cpsi): 200 cpsi  
Cartridge type: Sport  
Cartridge material: Metal  
Producer: AWG Polonez

**Product attributes:**

euro standard: Euro 4  
Inlet diameter: 80 mm, 62.5 mm, 76 mm, 60 mm,  
63.5 mm, 65 mm, 67 mm, 70 mm, 73 mm  
Insert length: 50 mm  
Capacity (cpsi): 200

**Product description:**

Sport metal catalytic converter cartridge with a capacity of 200 cpsi, to be welded into the housing (manifold). Compatible with gasoline engines, diesel engines and LPG systems and. Capacity of 200 cpsi is the optimal choice between the performance of the car and the emission standard to be met recommended for tuned cars and motorcycles.

**The catalytic converter, depending on the selected configuration, meets the requirements of the European directive:**

- EURO 4 Directive 98/69/EC, 2002/80/EC for all vehicles, in effect from 2000 to 2008.

Manufacturer's warranty: 12 months or 50,000 km.

The catalytic converter cartridge is selected based on the emission standard it is supposed to meet and its dimensions. Unfortunately, no catalog provides the dimensions of the cartridge, because theoretically it is a non-replaceable part, so in order to properly select the cartridge you need to measure the diameter and length of the catalytic converter housing. Then subtract the thickness of the wall of the catalytic converter housing, since the cartridge is located inside the housing. For example, if the catalytic converter housing has a diameter of 110 mm, a cartridge with a diameter of 105 mm would be suitable.