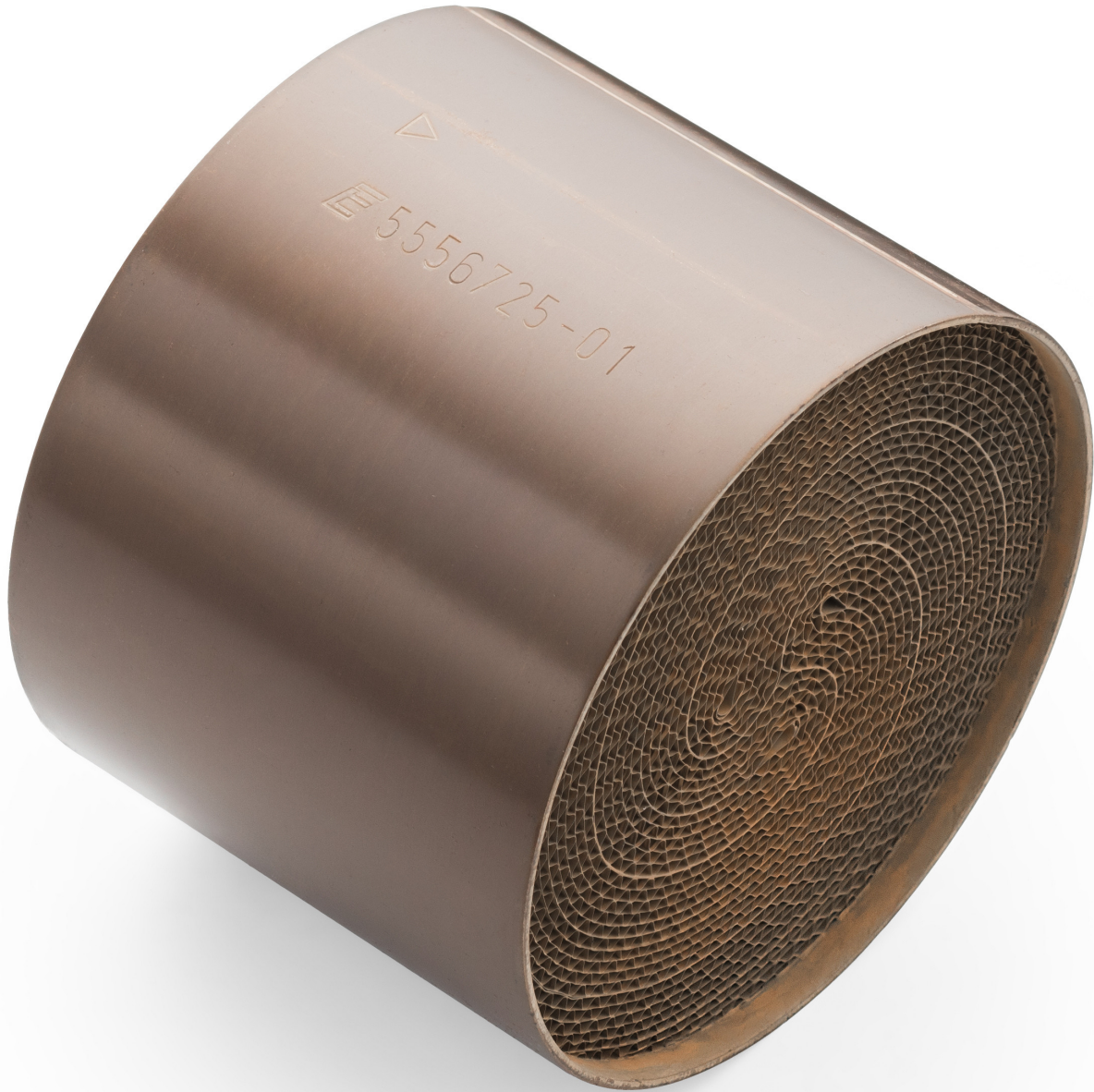




---

## HJS catalytic converter cartridge HF/TS series



**Product codes:**

Reference: 90603280

EAN13: -



---

**Product features:**

Capacity (cpsi): 100 cpsi  
Cartridge type: Sport  
Cartridge material: Metal - type S  
Producer: HJS  
EURO standard: 3/4  
EURO standard: 5/6  
EURO standard: OBD  
EURO standard: Motorsport  
EURO standard: 1/2  
EURO standard: 1/3

**Product attributes:**

euro standard: EURO 5/6, OBD, Motorsport, EURO 1/2, EURO 1/3, EURO 3/4  
Inlet diameter: 130 mm, 121 mm, 108 mm, 93 mm  
Insert length: 100 mm, 130 mm, 82 mm, 83 mm  
Capacity (cpsi): 100, 200

**Product description:**

**Sport HF+/TS type metal catalytic converter cartridge with 2 cores for increased performance and durability. Compatible with gasoline engines and LPG systems.**

**Catalytic converter, depending on the selected configuration, meets the requirements of the European directive:**

- Euro 1 Directive - 91/441/EEC, 93/59/EEC for passenger cars, in force since 1993.
- Euro 2 Directive - 94/12/EC, 96/69/EC for passenger cars, in effect since 1996
- Euro 3 Directive - 98/69/EC [12] for all vehicles, in effect since 2000.
- Euro 4 Directive - 98/69/EC, 2002/80/EC for all vehicles, effective from 2005
- Euro 5 Directive - 2007/715/EC[13] for light passenger and company cars. Effective from 2009
- Euro 6 Directive - Commission Regulation (EU) No. 459/2012. Effective from 2014
- MS - MS (Motorsport) catalytic converter cartridges are specifically tailored for racing use. They feature outstanding performance and reliability, which is crucial when competing at the highest level. FIA homologation confirms that the catalytic converter cartridges meet strict safety standards and emissions restrictions. This is important both for environmental protection and for the health of drivers and technical personnel.
- OBD "On-Board Diagnostics" - is a diagnostic system built into cars that monitors various parts of the vehicle, such as the engine, exhaust system and other vital components. In addition, OBD complies with emission standards, which is important for its operation.

**Catalytic converters HF+**

- HJS catalytic converters with the symbol HF+ are synonymous with reliability, featuring double-wrapped film and two cores for long-lasting durability and strength. This product meets emission standards from EURO 1 to EURO 6, guaranteeing excellent performance and compliance. Thanks to



---

robust materials and precision manufacturing, the HF+ catalytic converter offers optimum performance and long service life, meeting the requirements for a wide range of engines.

### **TS catalytic converters:**

- The TS catalytic converter is an advanced solution that uses a double-winding foil inside the catalyst and two cores. Innovative turbulence-generating profiles and optimized performance guarantee maximum efficiency with minimal flow resistance. The TS catalytic converter meets emission standards from EURO 5 and up, offering the best possible performance, compatibility with EOBD systems.

**The catalytic converter cartridge is selected based on the emission standard it is to meet and on its dimensions. Unfortunately, no catalog gives the dimensions of the cartridge, because theoretically it is a non-replaceable part, so in order to properly select the cartridge you need to measure the diameter and length of the catalytic converter housing. Then subtract the thickness of the wall of the catalytic converter housing, since the cartridge is located inside the housing. For example, when the catalytic converter housing has a diameter of 110 mm, a cartridge with a diameter of 105 mm would be suitable.**