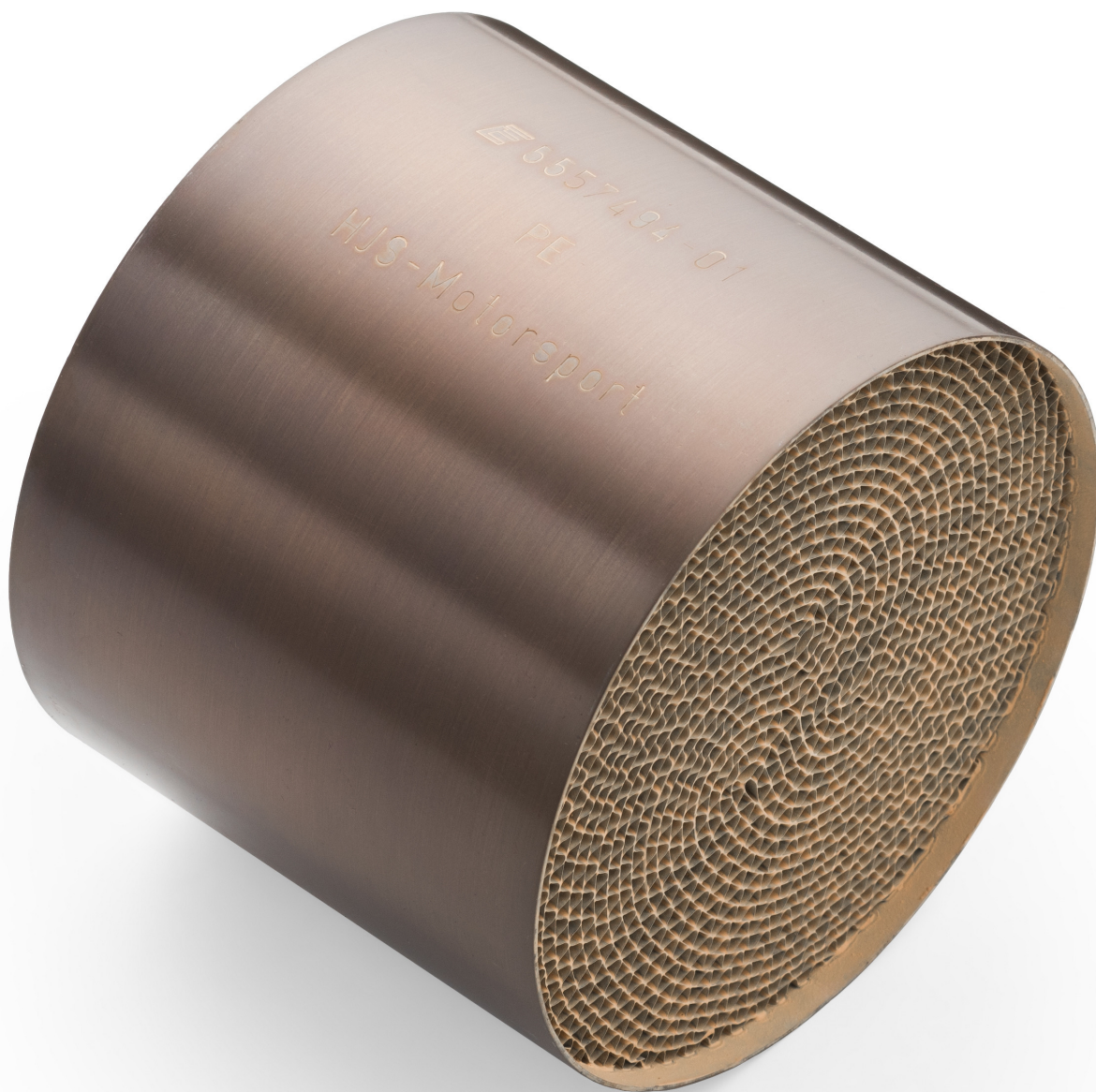




## HJS PE series Motorsport catalytic converter cartridge



### Product codes:

Reference: 90603201

EAN13: -



---

**Product features:**

Capacity (cpsi): 100 cpsi  
Cartridge type: Sport  
Cartridge material: Metal - type S  
Producer: HJS  
EURO standard: Motorsport

**Product attributes:**

euro standard: Motorsport  
Inlet diameter: 85 mm, 90 mm, 120 mm, 130 mm, 108 mm, 143 mm, 153 mm  
Insert length: 100 mm, 130 mm, 85 mm, 82 mm, 129 mm  
Capacity (cpsi): 100  
Purpose: Motorsport

**Product description:**

**Sport metal catalytic converter cartridge with 3 cores for increased performance and durability. Compatible with gasoline engines and LPG systems.**

**The catalytic converter, depending on the selected configuration, meets the requirements of the European directive:**

- MS - MS (Motorsport) catalytic converter cartridges are specially adapted for racing use. They feature outstanding performance and reliability, which is crucial when competing at the highest level. FIA homologation confirms that the catalytic converter cartridges meet strict safety standards and emissions restrictions. This is important both for environmental protection and for the health of drivers and technical personnel.

**HJS PE catalytic converters:**

- PE catalysts are distinguished by a 30% lower weight compared to previously used cup catalysts, while maintaining an unchanged film thickness (0.11 mm). Thanks to their perforated design, the catalysts reduce exhaust back-pressure by up to 15%. Despite the lighter weight, the (PE) film provides the same durability as previously used products, making them an excellent choice for demanding applications in a motorsports environment.

The catalytic converter insert is selected based on the emission standard it is to meet and its dimensions. Unfortunately, no catalog gives the dimensions of the cartridge, because theoretically it is a non-replaceable part, so in order to properly select the cartridge you need to measure the diameter and length of the catalytic converter housing. Then subtract the thickness of the wall of the catalytic converter housing, since the cartridge is located inside the housing. For example, if the catalytic converter housing has a diameter of 110 mm, a cartridge with a diameter of 105 mm would be suitable.