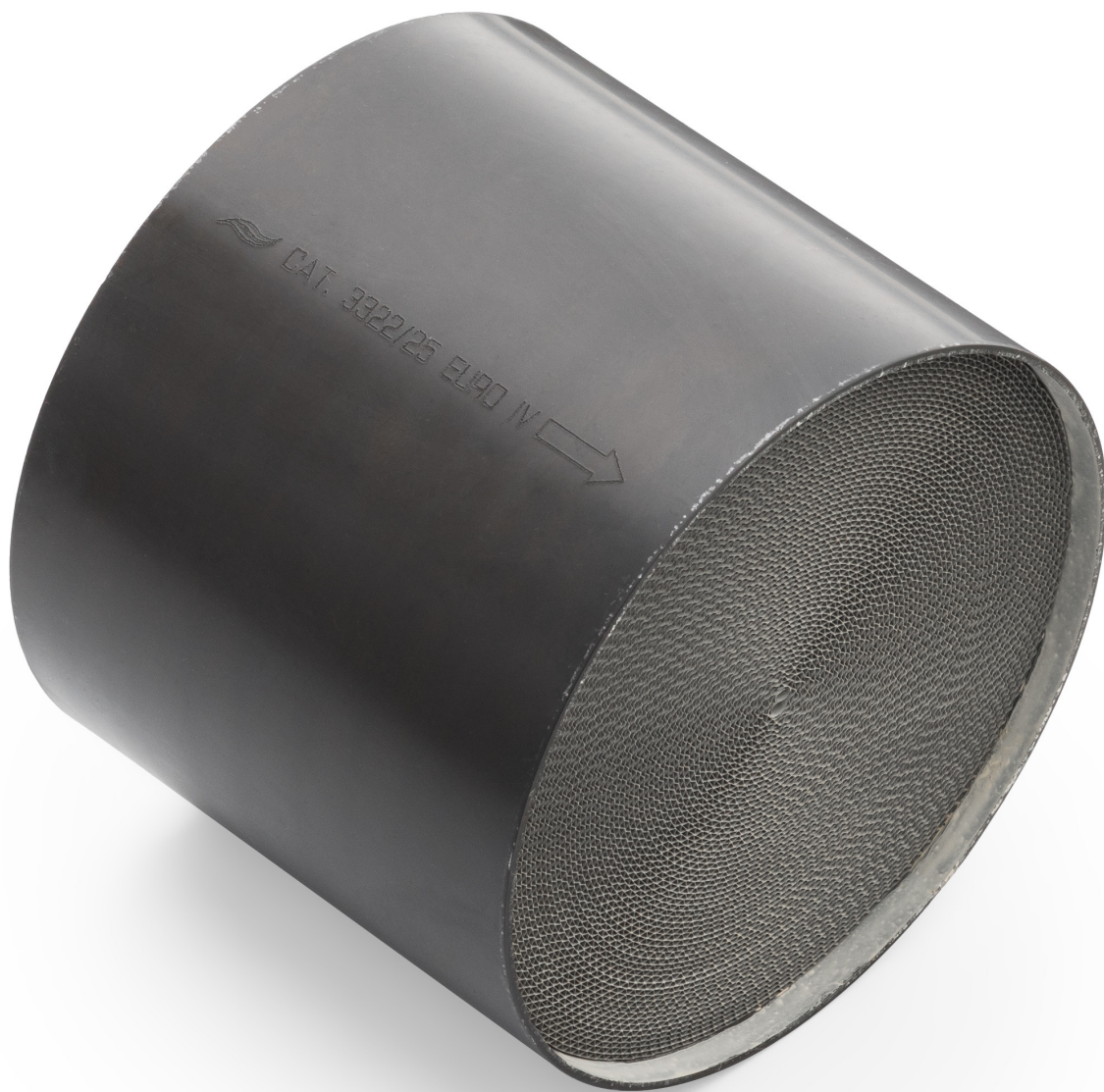




## AWG sport catalytic converter core



### Product codes:

Reference: SPORT

EAN13: 5904347525248



---

**Product features:**

Capacity (cpsi): 100 cpsi  
Capacity (cpsi): 200 cpsi  
Cartridge type: Sport  
Cartridge material: Metal  
Producer: AWG Polonez

**Product attributes:**

euro standard: Euro 2, Euro 3, Euro 4, Euro 5  
Inlet diameter: 95 mm, 100 mm, 105 mm, 110 mm,  
120 mm, 140 mm, 80 mm, 76 mm, 60 mm, 63.5 mm,  
65 mm, 67 mm, 70 mm, 73 mm  
Insert length: 100 mm, 80 mm, 50 mm  
Capacity (cpsi): 100, 200

**Product description:**

Sports metal catalytic converter cartridge with a capacity of 100-200 cpsi, to be welded into the housing (manifold). Compatible with petrol engines, diesel engines and LPG systems. A 100 cpsi capacity is recommended for rally and motorsport cars, while a 200 cpsi capacity is the optimum choice between the performance of the car and the emission standard it is designed to meet, and is recommended for tuned cars.

The catalytic converter, depending on the selected configuration, meets the requirements of the European directive:

- **EURO 2 Directive 94/12/EC, 96/69/EC for passenger cars, in force from 1996 to 2000.**
- **EURO 3 Directive 98/69/EC [12] for all vehicles, in effect since 2000**
- **EURO 4 Directive 98/69/EC, 2002/80/EC for all vehicles, in effect since 2005.**
- **EURO 5 Directive 2007/715/EC[13] for light passenger and company cars. In force since 2009.**

Manufacturer's warranty: 12 months or 50,000 km.

The catalytic converter insert is selected on the basis of the emission standard it is designed to comply with and its dimensions. Unfortunately, no catalogue gives the dimensions of the catalytic converter cartridge, as it is theoretically a non-replaceable part, so in order to select the correct cartridge, the diameter and length of the catalytic converter housing must be measured. The wall thickness of the catalytic converter housing must then be subtracted, as the insert is located inside the housing. For example, if the catalytic converter housing has a diameter of 110 mm, a cartridge with a diameter of 105 mm would be suitable.