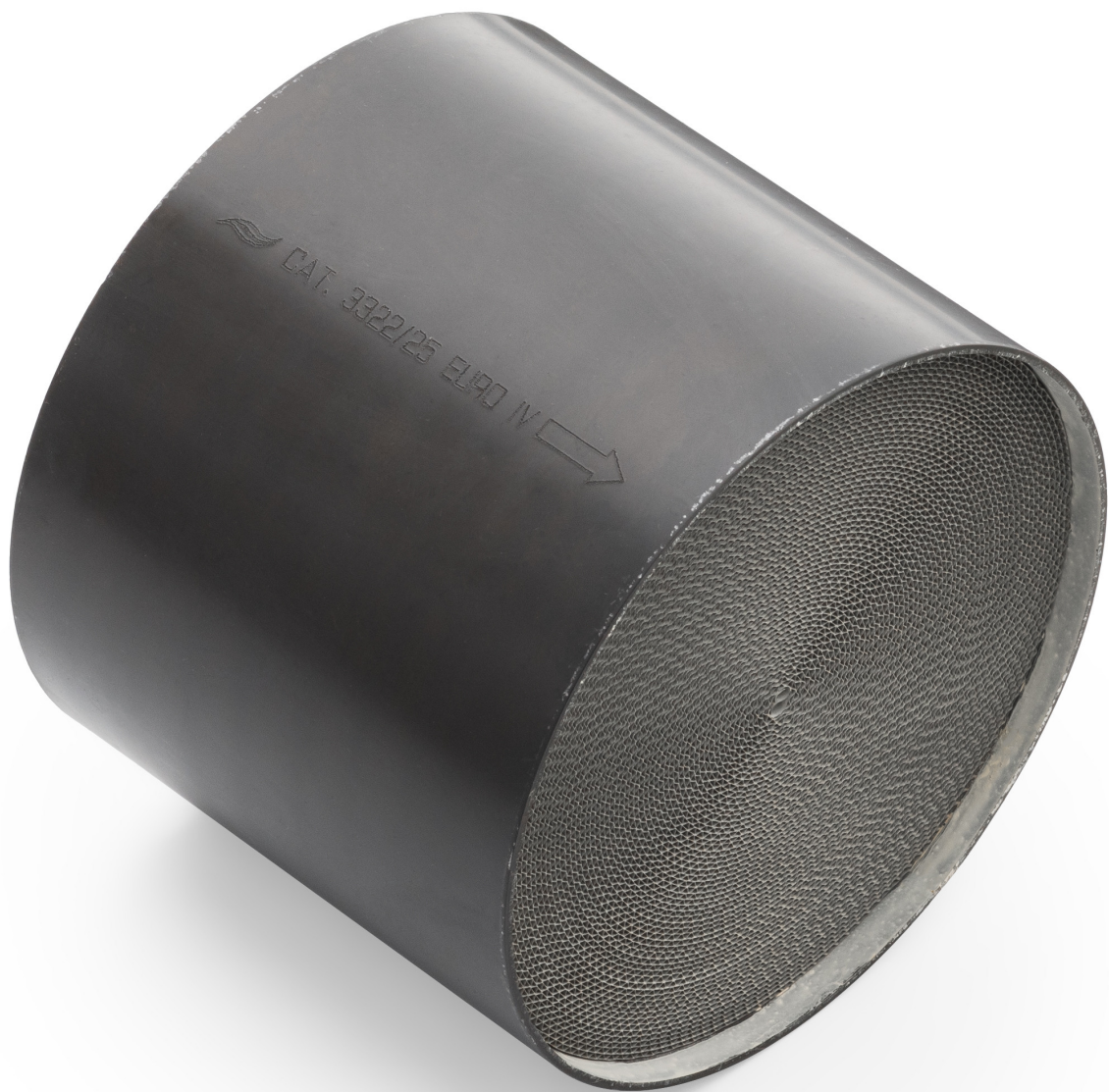




## AWG diesel catalytic converter core



### Product codes:

Reference: DIESEL

EAN13: 5904347525248



---

**Product features:**

Catalyst application: Diesel  
Cartridge type: Standard  
Cartridge material: Metal  
Producer: AWG Polonez

**Product attributes:**

euro standard: Euro 2, Euro 3, Euro 4, Euro 5, Euro 6  
Inlet diameter: 85 mm, 100 mm, 105 mm, 110 mm, 120 mm, 125 mm, 135 mm, 140 mm, 145 mm, 150 mm, 126 mm, 136 mm, 160 mm, 175 mm, 170 mm  
Insert length: 100 mm, 80 mm, 140 mm  
Capacity (cpsi): 200, 300, 400

**Product description:**

Universal metal catalytic converter cartridge to be welded into the housing (manifold). Compatible with diesel engines.

The catalytic converter, depending on the selected configuration, meets the requirements of the European directive:

- **EURO 2 Directive 94/12/EC, 96/69/EC for passenger cars, in force since 1996**
- **EURO 3 Directive 98/69/EC [12] for all vehicles, in effect since 2000**
- **EURO 4 Directive 98/69/EC, 2002/80/EC for all vehicles, in effect since 2005.**
- **EURO 5 Directive 2007/715/EC[13] for light passenger and company cars. In force since 2009.**
- **EURO 6 Commission Regulation (EU) No. 459/2012. In force since 2014.**

Manufacturer's warranty: 12 months or 50,000 km.

The catalytic converter insert is selected on the basis of the emission standard it is designed to comply with and its dimensions. Unfortunately, no catalogue gives the dimensions of the catalytic converter cartridge, as it is theoretically a non-replaceable part, so in order to select the correct cartridge, the diameter and length of the catalytic converter housing must be measured. The wall thickness of the catalytic converter housing must then be subtracted, as the insert is located inside the housing. For example, if the catalytic converter housing has a diameter of 110 mm, a cartridge with a diameter of 105 mm would be suitable.