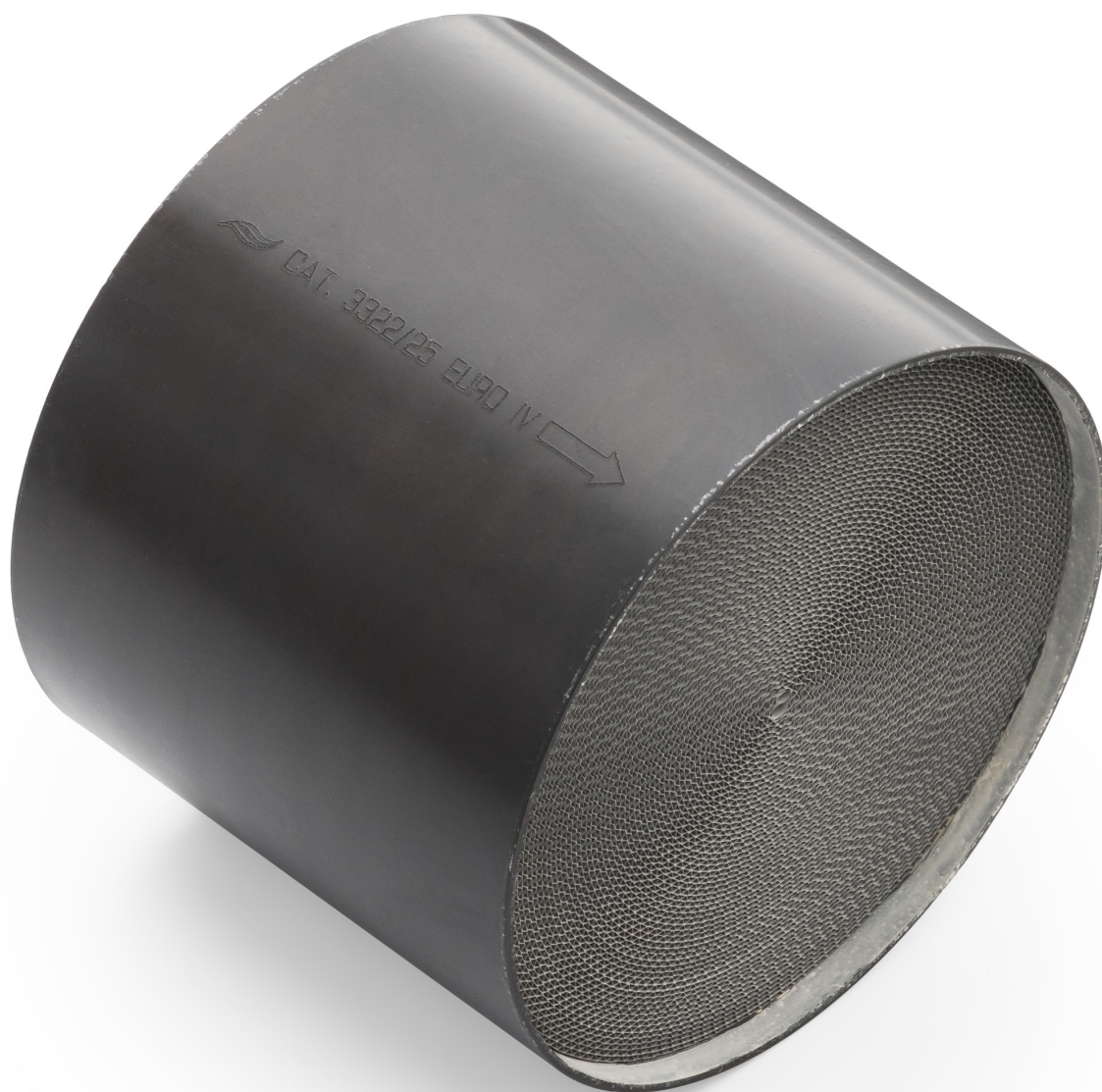




Gasoline catalytic converter core AWG



Product codes:

Reference: STANDARD

EAN13: -



Product features:

Catalyst application: Gasoline
Cartridge type: Standard
Cartridge material: Metal
Producer: AWG Polonez

Product attributes:

euro standard: Euro 2, Euro 3, Euro 4, Euro 5, Euro 6, No standard
Inlet diameter: 85 mm, 90 mm, 95 mm, 100 mm, 105 mm, 110 mm, 115 mm, 120 mm, 125 mm, 130 mm, 135 mm, 140 mm, 80 mm, 145 mm, 150 mm, 160 mm, 170 mm
Insert length: 100 mm, 80 mm, 140 mm, 50 mm, 60 mm
Capacity (cpsi): 400, 500, 600, 900

Product description:

Universal metal catalytic converter cartridge to be welded into the housing (manifold).

Compatible with gasoline engines and LPG systems.

The product has the following certificates and approvals:

- European approval (E24, E9, E3)
- ISO 9001 Quality Management System certificate for the design of production and sales of automotive catalytic converters issued by TUV SUD in Munich.

The catalytic converter, depending on the selected configuration, meets the requirements of the European directive:

- **EURO 2 Directive 94/12/EC, 96/69/EC for passenger cars, in force since 1996**
- **EURO 3 Directive 98/69/EC [12] for all vehicles, in effect since 2000**
- **EURO 4 Directive 98/69/EC, 2002/80/EC for all vehicles, in effect since 2005.**
- **EURO 5 Directive 2007/715/EC[13] for light passenger and company cars. In force since 2009.**
- **EURO 6 Commission Regulation (EU) No. 459/2012. In force since 2014.**

Manufacturer's warranty: 12 months or 50,000 km.



The catalytic converter insert is selected on the basis of the emission standard it is supposed to comply with and its dimensions. Unfortunately, no catalogue gives the dimensions of the insert, because theoretically it is a non-replaceable part, so in order to properly select the insert you must measure the diameter and length of the catalytic converter housing. The wall thickness of the catalytic converter housing must then be subtracted, as the insert is located inside the housing. For example, if the catalytic converter housing has a diameter of 120 mm, a cartridge with a diameter of 115 mm would be suitable.