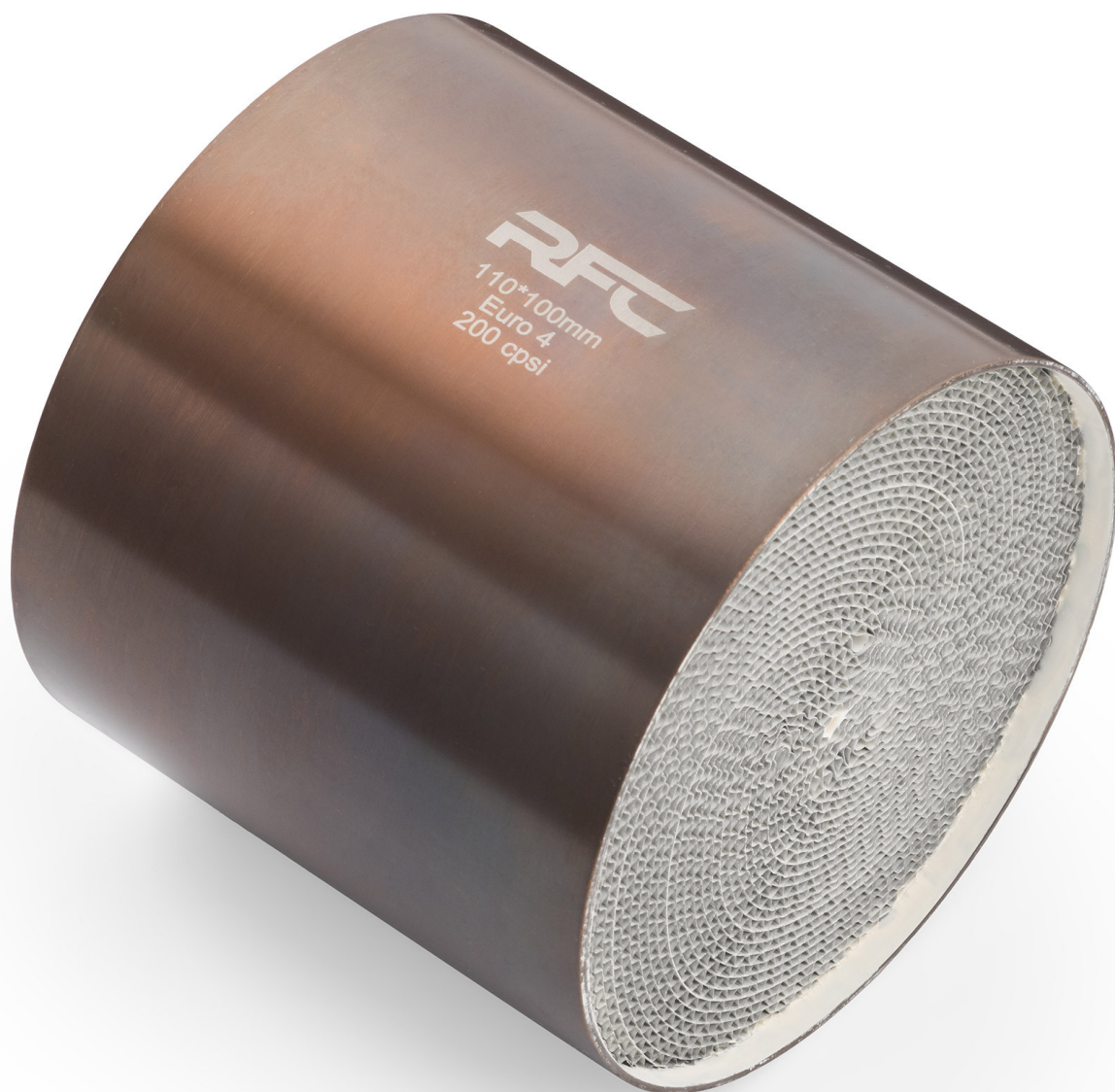




RFC sport catalytic converter core



Product codes:

Reference: MS31

EAN13: 5904347540746



Product features:

Capacity (cpsi): 100 cpsi
Capacity (cpsi): 200 cpsi
Capacity (cpsi): 300 cpsi
Cartridge type: Sport
Cartridge material: Metal - type S
Producer: RFC

Product attributes:

euro standard: Euro 2, Euro 3, Euro 4, Euro 5, Euro 6
Inlet diameter: 100 mm, 110 mm, 120 mm, 125 mm, 130 mm, 140 mm, 149 mm
Insert length: 100 mm, 80 mm, 50 mm, 60 mm, 70 mm
Capacity (cpsi): 100, 200, 300

Product description:

Sports metal S-type catalytic converter insert with 3 cores for increased performance and durability. Compatible with petrol, diesel engines and LPG installations. A throughput of 200cpsi is the golden mean between efficiency and effectiveness of exhaust gas treatment. They are perfect for tuning - sporty performance without harm to the environment.

- Constant temperature resistance of 1100 °C
- Temporary temperature resistance of 1150 °C

Depending on the selected configuration, the catalyst meets the requirements of the European directive:

- EURO 2 Directive 94/12/EC, 96/69/EC for passenger cars, in force since 1996.
- EURO 3 Directive 98/69/EC [12] for all vehicles, applicable from 2000.
- EURO 4 Directive 98/69/EC, 2002/80/EC for all vehicles, applicable from 2005.
- EURO 5 Directive 2007/715/EC[13] for light passenger cars and company cars. Valid since 2009.
- EURO 6 Commission Regulation (EU) No 459/2012. Valid since 2014.

Manufacturer's warranty: 12 months or 50,000 km.

The catalytic converter insert is selected based on the exhaust emission standard it is to meet and its dimensions. Unfortunately, no catalog provides the dimensions of the insert, because theoretically it is a non-replaceable part, so in order to properly select the insert, you need to measure the diameter and length of the catalytic converter housing. Then you need to subtract the wall thickness of the catalytic converter housing, since the insert is inside the housing. For example, if the catalyst housing has a diameter of 110 mm, an insert with a diameter of 105 mm will be suitable.