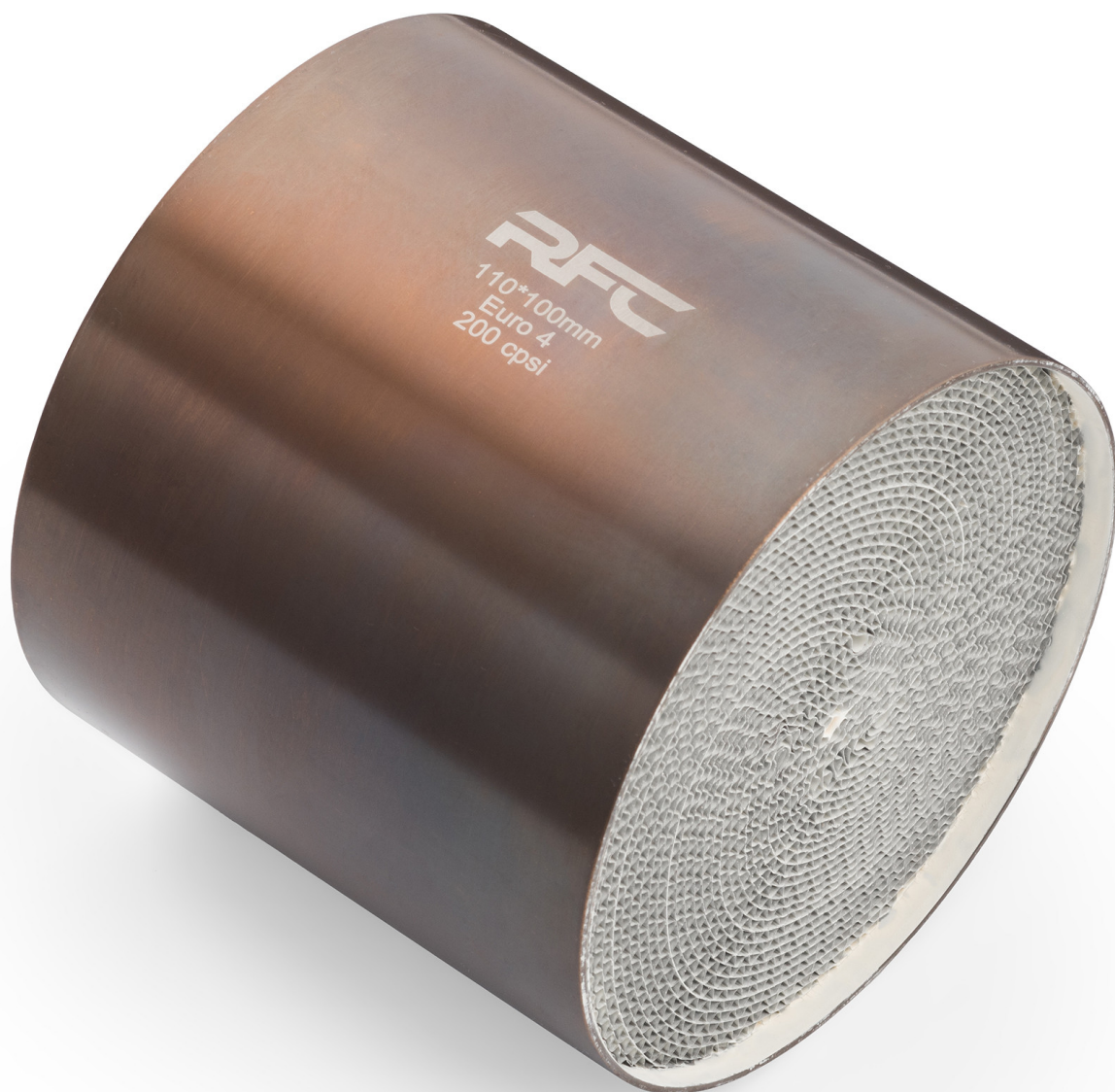




RFC universal catalytic converter core



Product codes:

Reference: MS11

EAN13: 5904347540746



Product features:

Catalyst application: Gasoline
Cartridge type: Standard
Cartridge material: Metal - type S
Producer: RFC

Product attributes:

euro standard: Euro 4, Euro 5, Euro 6
Inlet diameter: 90 mm, 100 mm, 105 mm, 110 mm, 115 mm, 120 mm, 125 mm, 130 mm, 140 mm, 104 mm
Insert length: 100 mm, 80 mm, 60 mm
Capacity (cpsi): 400, 500, 600

Product description:

Universal S-type metal catalytic converter cartridge with 3 cores for increased performance and durability. Compatible with gasoline engines and LPG systems.

Permanent 950 °C temperature resistance

Instantaneous temperature resistance of 1100 °C

The catalytic converter, depending on the selected configuration, meets the requirements of the European directive:

- EURO 2 Directive 94/12/EC, 96/69/EC for passenger cars, effective since 1996.
- EURO 3 Directive 98/69/EC [12] for all vehicles, effective since 2000.
- EURO 4 Directive 98/69/EC, 2002/80/EC for all vehicles, effective from 2005.
- EURO 5 Directive 2007/715/EC[13] for light passenger and company cars. Effective since 2009.
- EURO 6 Commission Regulation (EU) No. 459/2012, effective from 2014.

Manufacturer's warranty: 12 months or 50,000 km.

The catalytic converter cartridge is selected on the basis of the emission standard it is to meet and its dimensions. Unfortunately, no catalog provides the dimensions of the cartridge, because theoretically it is a non-replaceable part, so in order to properly select the cartridge you need to measure the diameter and length of the catalytic converter housing. Then subtract the thickness of the wall of the catalytic converter housing, since the cartridge is located inside the housing. For example, when the catalytic converter housing has a diameter of 110 mm, a cartridge with a diameter of 105 mm will be suitable.